

MT Ferrule

Hakusan can offer a wide variety of Multi-fiber optical connection solutions with over 35 years of expertise and experience.



12/24/36/48 MT Ferrule



12MT



36MT



24MT



48MT

16/32 MT Ferrule



16MT



32MT

Hakusan Inc.



16-4, 2-chome, Minamiikebukuro, Toshima-ku, Tokyo 171-0022, Japan

TEL: +81(0)3 5951 1614 / FAX: +81(0)3 5951 1216

<https://hakusan-mfg.co.jp/en>

*Contents of this brochure are subject to change without notice.



HS-CN001 2026.04

MT Ferrule

We've been producing a wide range of MT ferrule products lineup using ultra-high precision injection molding technology cultivated in our long manufacturing history. The premium, super low loss type is also available for single-mode and multi-mode transmission with various fiber counts.

▼ 12/24/36/48 MT Ferrule Series

Mode	Product Name	Expected Polishing	P/N	Fiber Count	Insertion loss (dB)		
					0.35	0.5	0.7
Single-mode	12MT-PA-S	Angled PC	90A11634	12			●
	12MT-PA-SLS	Angled PC	90A11427	12	●		
	24MT-PA-S	Angled PC	90A11450	24			●
	24MT-PA-SLS-10N*	Angled PC	ORD2025-087	24	●		
	24MT-PA-SLS-20N*	Angled PC	ORD2023-040	24	●		
	36MT-PA-SLS*	Angled PC	ORD2023-052	36	●		
	48MT-PA-S*	Angled PC	ORD2022-037	48			●
Multi mode	12MT-PF-M	Flat PC	90A11524	12		●	
	12MT-PF-SLM	Flat PC	90A11632	12	●		
	12MT-PA-SLM	Angled PC	90A11652	12	●		
	24MT-PF-M	Flat PC	90A11330	24		●	
	24MT-PF-SLM	Flat PC	90A11453	24	●		
	36MT-PF-M*	Flat PC	Not Fixed	36		●	
	48MT-PF-M*	Flat PC	ORD2023-010	48		●	

◆ Refer to the following standard : IEC 61754-5 / IEC 61754-7-1 / IEC 61754-7-2 / TIA-604-5-C

※: Under development (sample available only for red text ones)

■ MT ferrule manufactured by Hakusan Inc. has acquired technology transfer from NTT.

Hakusan Inc.



16-4, 2-chome, Minamiikebukuro, Toshima-ku, Tokyo 171-0022, Japan

TEL: +81(0)3 5951 1614 / FAX: +81(0)3 5951 1216

<https://hakusan-mfg.co.jp/en>

*Contents of this brochure are subject to change without notice.



HS-CN002 2026.04

MT Ferrule

We've been producing a wide range of MT ferrule products lineup using ultra-high precision injection molding technology cultivated in our long manufacturing history. The premium, super low loss type is also available for single-mode and multi-mode transmission with various fiber counts.

▼ 16/32 MT Ferrule Series

Transmission Mode	Product Name	Expected Polishing	P/N	Fiber Count	Insertion loss (dB)		
					0.35	0.5	0.7
Single-mode	16MT-PA-S	Angled PC	90A11661	16			●
	16MT-PA-SLS	Angled PC	90A11619	16	●		
	32MT-PA-SLS*	Angled PC	ORD2023-032	32	●		
Multimode	16MT-PF-M	Flat PC	90A11663	16		●	
	16MT-PA-SLM	Angled PC	90A11662	16	●		
	16MT-PF-SLM	Flat PC	90A11664	16	●		
	32MT-PF-M	Flat PC	90A11503	32		●	
	32MT-PF-SLM	Flat PC	90A11647	32	●		
	32MT-PA-SLM	Angled PC	90A11648	32	●		

◆ Refer to the following standard : IEC 61754-5 / IEC 61754-7-3 / IEC 61754-7-4 / TIA 604-18

※: Under development (sample available only for red text ones)

■ MT ferrule manufactured by Hakusan Inc. has acquired technology transfer from NTT.

Hakusan Inc.



16-4, 2-chome, Minamiikebukuro, Toshima-ku, Tokyo 171-0022, Japan
TEL: +81(0)3 5951 1614 / FAX: +81(0)3 5951 1216

<https://hakusan-mfg.co.jp/en>

*Contents of this brochure are subject to change without notice.



HS-CN003 2026.04

Metal Pin Clamp

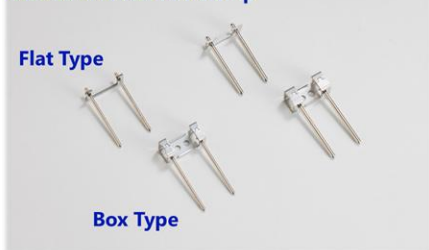
MT ferrule should have guide pins for optical connection.

Hakusan can offer a wide variety of Metal Pin Clamps based on the performance.

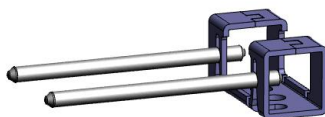
Metal Pin Clamp consists of Pin + Pin Keeper.

Pin Keeper Type	Application	Applicable MT Ferrules	Product Name	P/N	Grade
Box Type	MPO Connectors	12/24 MT	Metal Pin Clamp CMM	90A11517	MM-SL
			Metal Pin Clamp CSM	90A11518	MM-LL SM-SL
			Metal Pin Clamp CE	90A11532	SM-LL
		16/32 MT	Metal Pin Clamp 0.55 CMM	90A11547	MM-SL
			Metal Pin Clamp 0.55 CSM	90A11548	MM-LL SM-SL
			Metal Pin Clamp 0.55 CE	90A11549	SM-LL
Flat Type	MT-Jumper (for Optical Transceiver)	12/24 MT	Metal Pin Clamp FLAT CMM	90A11560	MM-SL
			Metal Pin Clamp FLAT CSM	90A11561	MM-LL SM-SL
			Metal Pin Clamp FLAT CE	90A11562	SM-LL
		16/32 MT	Metal Pin Clamp FLAT 0.55 CMM	90A11557	MM-SL
			Metal Pin Clamp FLAT 0.55 CSM	90A11558	MM-LL SM-SL
			Metal Pin Clamp FLAT 0.55 CE	90A11559	SM-LL

Standard Metal Pin Clamp



BOX Type



FLAT Type



Hakusan Inc.



16-4, 2-chome, Minamiikebukuro, Toshima-ku, Tokyo 171-0022, Japan

TEL: +81(0)3 5951 1614 / FAX: +81(0)3 5951 1216

<https://hakusan-mfg.co.jp/en>

*Contents of this brochure are subject to change without notice.



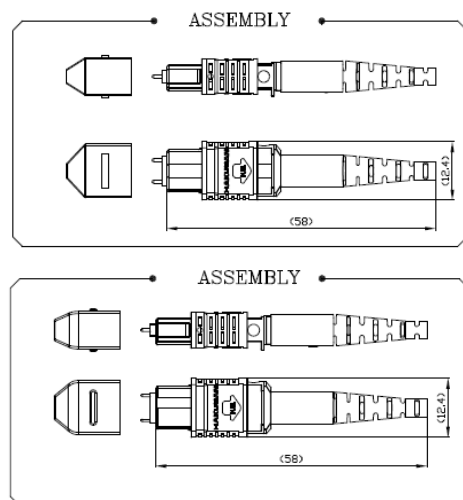
HS-CN004 2026.04

MPO Connector

Hakusan can offer Hakusan Brand MPO connectors and ensure quality with good-quality MT ferrule to support the market demands for multi-fiber optical connection solutions.

*Hakusan's MPO kits exclude MT ferrules. You can choose relevant MT ferrule from MT ferrule product list.

Specifications	Details
Fiber Counts	12F/16F/24F/32F
Performance	Upon MT ferrules grade
Housing Color	Yellow/Green/Magenta/Aqua/Beige/Lime green
Boots Type *Standard : Black Green/Blue/White optional	2.0/3.0/3.2/3.5/3.8/5.0 Round Boots Bare Ribbon Boots Oval Round boots
Operating Temp.	-40°C~75°C
Durability	500 mating *TIA 568.3 based
*IEC 61754-7 and TIA/EIA 604-5 Compliant for MPO interfaces *Telcordia GR-1435-CORE Compliant	



Hakusan Inc.



16-4, 2-chome, Minamiikebukuro, Toshima-ku, Tokyo 171-0022, Japan

TEL: +81(0)3 5951 1614 / FAX: +81(0)3 5951 1216

<https://hakusan-mfg.co.jp/en>

*Contents of this brochure are subject to change without notice.



HS-CN005 2026.04

MPO Connector

▼MPO Connector Typical Parts Description/Number List

Parts Description Example

① 12F — ② YE — ③ R — ④ E — ⑤ BK

①	Fiber Counts	②	HSG Color	③	Cable Type	④	Pin Type	⑤	Boots Color
12F	12 fibers	BE	Beige	B	Bare Ribbon	F	Female	BK	Black
16F	16/32 fibers	AQ	Aqua	R	Round Cable(3.0)	M	Multimode ^{*1)}	GR	Green
24F	24 fibers	MA	Magenta	O	Oval Jacket Cable	S	Single-mode ^{*2)}	BL	Blue
		LI	Limegreen	2R	2.0mm Round Cable (12F Only)	E	Elite ^{*3)}	WH	White
		GR	Green	32R	3.2mm Round Cable (24F Only)				
		YE	Yellow	35R	3.5mm Round Cable (16F Only)				
				38R	3.8mm Round Cable				
				5R	5.0mm Round Cable (12F Only)				

*1) Male Pin for MultiMode Standard Loss

*MT ferrules must be ordered separately.

*2) Male Pin for Single-mode Standard Loss and Multimode Low Loss

*3) Male Pin for Single-mode Low Loss

▼Ex.SM Low Loss MPO Housing List for 3.0 Round Cable

Fiber Count	Housing Color	Cable Type	Pin Type	Boots Color	Part Description
12F	YE	R	F	BK	12F-YE-R-F-BK
12F	YE	R	E	BK	12F-YE-R-E-BK
16F	YE	R	F	BK	16F-YE-R-F-BK
16F	YE	R	E	BK	16F-YE-R-E-BK
24F	YE	R	F	BK	24F-YE-R-F-BK
24F	YE	R	E	BK	24F-YE-R-E-BK

Please feel free to contact us when you need any MPO housing kits.

Hakusan Inc.



16-4, 2-chome, Minamiikebukuro, Toshima-ku, Tokyo 171-0022, Japan

TEL: +81(0)3 5951 1614 / FAX: +81(0)3 5951 1216

<https://hakusan-mfg.co.jp/en>

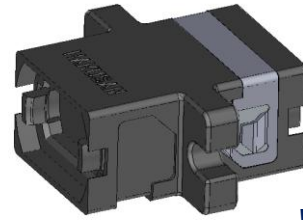
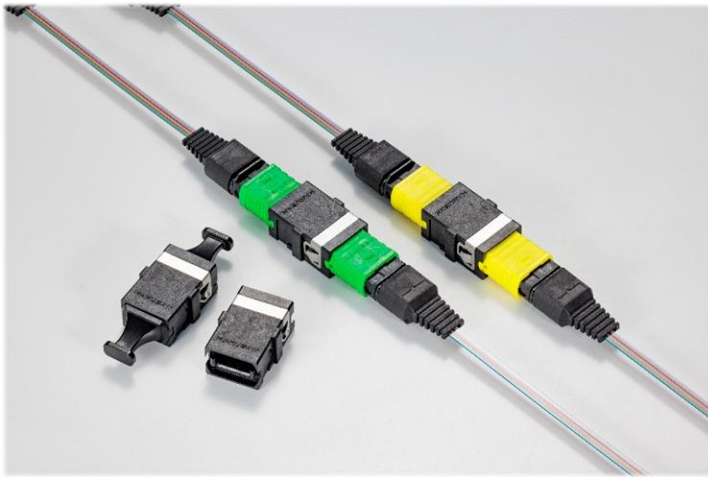
*Contents of this brochure are subject to change without notice.



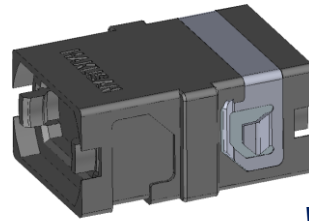
HS-CN006 2026.04

MPO-MPO Adapter

Standard 12F/16F MPO-MPO Adapters (with/without flange)



with flange



without flange

Style	Type	Fiber	P/N
Standard	with flange	12F/24F	ORD2024-053
		16F/32F	ORD2024-055
	w/o flange	12F/24F	ORD2024-052
		16F/32F	ORD2024-054

Hakusan Inc.



16-4, 2-chome, Minamiikebukuro, Toshima-ku, Tokyo 171-0022, Japan
TEL: +81(0)3 5951 1614 / FAX: +81(0)3 5951 1216

<https://hakusan-mfg.co.jp/en>

*Contents of this brochure are subject to change without notice.



HS-CN007 2026.04

MPO Master Cord

For Precise Insertion Loss Measurement



➤ Single-Mode 12/16 Master Cord

- VS.master IL MAX \leq 0.20 dB

➤ Single-Mode 24 Master Cord

- VS.master IL MAX \leq 0.25 dB※

※Depending on the MT ferrule preparation status

Hakusan Inc.

 **HAKUSAN**

16-4, 2-chome, Minamiikebukuro, Toshima-ku, Tokyo 171-0022, Japan

TEL: +81(0)3 5951 1614 / FAX: +81(0)3 5951 1216

<https://hakusan-mfg.co.jp/en>

*Contents of this brochure are subject to change without notice.


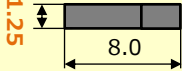
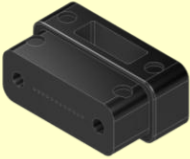
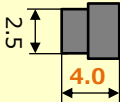
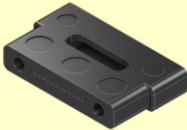
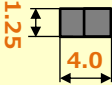


HS-CN008 2026.04

MTCOMPACT®

We have a lineup of size-reduced MT ferrules.
These MT ferrules are helpful for limited space within equipment.

▼ MTCOMPACT® Series

Product features		Transmission Mode	Product Name	Fiber Count
Slim Half thickness of standard MT Ferrule		Multimode	12MT-PF-M-T1.25^{A)} P/N: 90A11508	12
				
Short Half length of standard MT Ferrule		Multimode	12MT-PF-M-L4^{A)} P/N: ORD2023-087	12
				
Slim & Short Half thickness & length of standard MT Ferrule		Single-mode	16MT-PF-M-L4^{B)}※ P/N: ORD2023-026	16
			12MT-PA-S-L4^{A)}※ P/N: ORD2022-005	12
		Multimode	16MT-PA-S-L4^{B)}※ P/N: ORD2023-025	16
			12MT-PF-M-T1.25-L4^{A)} P/N: 90A11553	12
		Single-mode	16MT-PF-M-T1.25-L4^{B)}※ P/N: ORD2023-051	16
			12MT-PA-S-T1.25-L4^{A)}※ P/N: ORD2022-014	12
			16MT-PA-S-T1.25-L4^{B)}※ P/N: ORD2023-080	16

A) Optical interfaces refer to with the following standards: : IEC 61754-5 / IEC 61754-7-1 / TIA-604-5

B) Optical interfaces refer to with the following standards: IEC 61754-7-3 / TIA 604-18

※: Under development (sample available only for red text ones)

Hakusan Inc.

 **HAKUSAN**

16-4, 2-chome, Minamiikebukuro, Toshima-ku, Tokyo 171-0022, Japan

TEL: +81(0)3 5951 1614 / FAX: +81(0)3 5951 1216

<https://hakusan-mfg.co.jp/en>

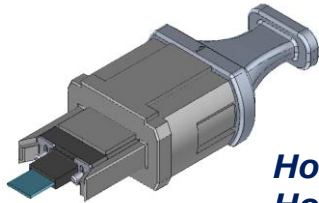
*Contents of this brochure are subject to change without notice.



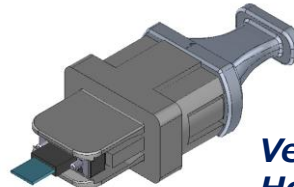
HS-CN009 2026.04

MT - MPO Adapter

For standard MT Ferrule



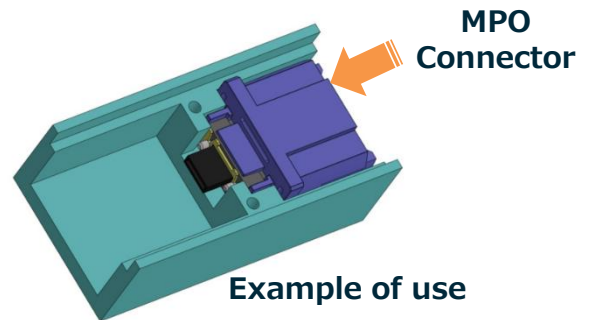
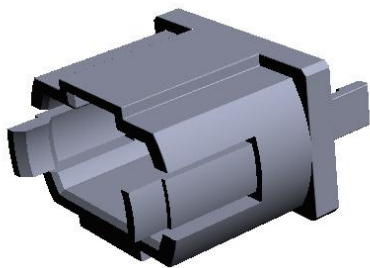
*Horizontal
Holding Type*



*Vertical
Holding Type*

For MTCOMPACT® Short

The "Transceiver type" is suitable for expanding the mounting space in an optical transceiver.



Style	Type	Fiber	P/N
Standard MT-MPO adapter	Horizontal	12F	ORD2024-037
	Vertical	12F/24F	ORD2024-038
		16F/32F	ORD2024-085
MTCOMPACT Short - MPO adapter	-	12F	ORD2023-008
		16F	ORD2023-044

◆ Optical and mechanical reference planes refer to with the following standard: IEC 61754-7-1, IEC 61754-7-3

Hakusan Inc.



16-4, 2-chome, Minamiikebukuro, Toshima-ku, Tokyo 171-0022, Japan

TEL: +81(0)3 5951 1614 / FAX: +81(0)3 5951 1216

<https://hakusan-mfg.co.jp/en>

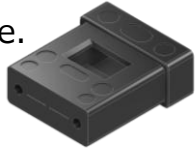
*Contents of this brochure are subject to change without notice.



HS-CN010 2026.04

MTRCF®

We are on track with development for the MT ferrule with for reduced cladding fiber. The fiber hole of 80 μ m is available. These MT ferrules(MTRCF®) are the same size as the standard MT ferrule.



▼MTRCF™

Product features	Mode	Product Name	Fiber count
250 μ m pitch fiber hole	Single-mode	12MT-PA-SLS- ϕ 80 ^{A)} ※ P/N: ORD2021-044	12
		16MT-PA-SLS- ϕ 80 ^{A)} ※ P/N: ORD2021-045	16
		24MT-PA-SLS- ϕ 80 ^{A)} ※ P/N: ORD2025-057	24
		32MT-PA-SLS- ϕ 80 ^{A)} ※ P/N: ORD2024-009	32

▼MTDS® (Narrow-Pitch MT Ferrule)

Product features	Mode	Product Name	Fiber count
125 μ m pitch fiber hole	Multimode	24MT-PF-M- ϕ 80-125 [※] P/N: ORD2023-056	24
127 μ m pitch fiber hole	Single-mode	32MT-PA-S- ϕ 80-127 [※] P/N: ORD2024-086	32

A) Optical interfaces refer to with the following standards: IEC 61754-5 / IEC 61754-7-1 / TIA-604-5

B) Optical interfaces refer to with the following standards: IEC 61754-5 / IEC 61754-7-3 / TIA 604-18

※: Under development (sample available only for red text ones)

Hakusan Inc.



16-4, 2-chome, Minamiikebukuro, Toshima-ku, Tokyo 171-0022, Japan

TEL: +81(0)3 5951 1614 / FAX: +81(0)3 5951 1216

<https://hakusan-mfg.co.jp/en>

*Contents of this brochure are subject to change without notice.



HS-CN011 2026.04