

# MT Ferrule

We've been producing a wide range of MT ferrule products lineup using ultra-high precision injection molding technology cultivated in our long manufacturing history.

The premium, super low loss type is also available for single-mode and multi-mode transmission with various fiber counts.

## ▼ 12/24/36/48 MT Ferrule Series



Transmission Mode	Product Name	Expected Polishing	Fiber Count	Insertion loss (dB)		
				0.35	0.5	0.7
Single Mode	12MT-PA-S	Angled PC	12			●
	12MT-PA-SLS	Angled PC	12	●		
	24MT-PA-S	Angled PC	24			●
	24MT-PA-LS	Angled PC	24		●	
	24MT-PA-SLS*	Angled PC	24	●		
	36MT-PA-S*	Angled PC	36			●
	36MT-PA-SLS*	Angled PC	36	●		
	48MT-PA-S*	Angled PC	48			●
Multi Mode	12MT-PF-M	Flat PC	12		●	
	12MT-PF-SLM	Flat PC	12	●		
	24MT-PF-M	Flat PC	24		●	
	24MT-PF-SLM	Flat PC	24	●		
	36MT-PF-M*	Flat PC	36		●	
	48MT-PF-M*	Flat PC	48		●	



12MT



24MT



36MT



48MT

◆ Comply with the following standard : IEC 61754-5 / IEC 61754-7-1 / IEC 61754-7-2 / TIA-604-5-C

※: Under development

■ MT ferrule manufactured by Hakusan Inc. has acquired technology transfer from NTT.

## Hakusan Inc.



16-4, 2-chome, Minamiikebukuro, Toshima-ku, Tokyo 171-0022, Japan  
 TEL: +81(0)3 5951 1614 / FAX: +81(0)3 5951 1216

<https://hakusan-mfg.co.jp/en>

\*Contents of this brochure are subject to change without notice.

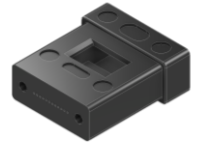


HS-CN001\_7 2023.8

# MT Ferrule

We've been producing a wide range of MT ferrule products lineup using ultra-high precision injection molding technology cultivated in our long manufacturing history.

The premium, super low loss type is also available for single-mode and multi-mode transmission with various fiber counts.



## ▼ 16/32 MT Ferrule Series

Transmission Mode	Product Name	Expected Polishing	Fiber Count	Insertion loss (dB)		
				0.35	0.5	0.7
Single Mode	16MT-PA-S	Angled PC	16			●
	16MT-PA-SLS	Angled PC	16	●		
	32MT-PA-S*	Angled PC	32			●
	32MT-PA-SLS*	Angled PC	32	●		
Multi Mode	16MT-PF-M	Flat PC	16		●	
	16MT-PA-SLM	Angled PC	16	●		
	32MT-PF-M	Flat PC	32		●	
	32MT-PF-SLM	Flat PC	32	●		
	32MT-PA-SLM	Angled PC	32	●		



16MT



32MT

◆ Comply with the following standard : IEC 61754-5 / IEC 61754-7-3 / IEC 61754-7-4 / TIA 604-18

※: Under development

■ MT ferrule manufactured by Hakusan Inc. has acquired technology transfer from NTT.

**Hakusan Inc.**



16-4, 2-chome, Minamiikebukuro, Toshima-ku, Tokyo 171-0022, Japan  
TEL: +81(0)3 5951 1614 / FAX: +81(0)3 5951 1216

<https://hakusan-mfg.co.jp/en>


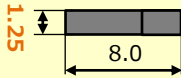

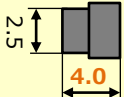
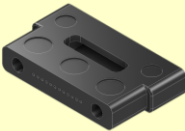
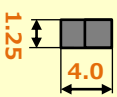
\*Contents of this brochure are subject to change without notice.

HS-CN002\_7 2024.6

# MTCOMPACT®

We have a lineup of size-reduced MT ferrules.  
These MT ferrules are helpful for limited space within equipment.

## ▼ MTCOMPACT® Series

Product features		Transmission Mode	Product Name	Fiber Count
<b>Slim</b> Half thickness of standard MT Ferrule		Multi Mode	<b>12MT-PF-M-T1.25<sup>A)</sup></b>	12
				
<b>Short</b> Half length of standard MT Ferrule		Multi Mode	<b>12MT-PF-M-L4<sup>A)</sup></b>	12
				
		<b>12MT-PA-S-L4<sup>A)</sup>※</b>	12	
		<b>16MT-PA-S-L4<sup>B)</sup>※</b>	16	
		<b>12MT-PA-S-L4<sup>A)</sup>※</b>	12	
<b>Slim &amp; Short</b> Half thickness & length of standard MT Ferrule		Multi Mode	<b>12MT-PF-M-T1.25-L4<sup>A)</sup></b>	12
				
		<b>12MT-PA-S-T1.25-L4<sup>A)</sup>※</b>	12	
		<b>16MT-PA-S-T1.25-L4<sup>B)</sup>※</b>	16	
		<b>12MT-PA-S-T1.25-L4<sup>A)</sup>※</b>	12	

A) Optical interfaces comply with the following standards: : IEC 61754-5 / IEC 61754-7-1 / TIA-604-5

B) Optical interfaces comply with the following standards: IEC 61754-7-3 / TIA 604-18

※: Under development

**Hakusan Inc.**



16-4, 2-chome, Minamiikebukuro, Toshima-ku, Tokyo 171-0022, Japan

TEL: +81(0)3 5951 1614 / FAX: +81(0)3 5951 1216

<https://hakusan-mfg.co.jp/en>

\*Contents of this brochure are subject to change without notice.



HS-CN003\_8 2023.8

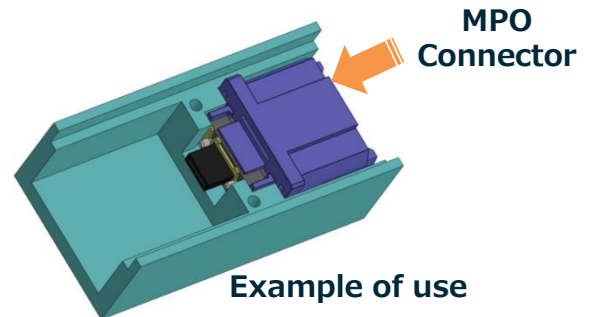
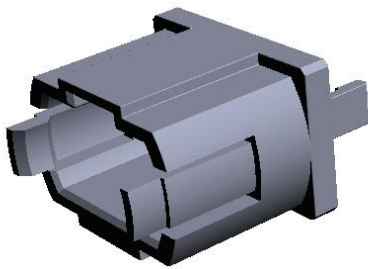
# MTCOMPACT® Short - MPO Adapter

We've developed an adapter for MTCOMPACT® Short ferrule. This adapter connects the MTCOMPACT® Short ferrule to the MPO connector. We offer two types of adapters.



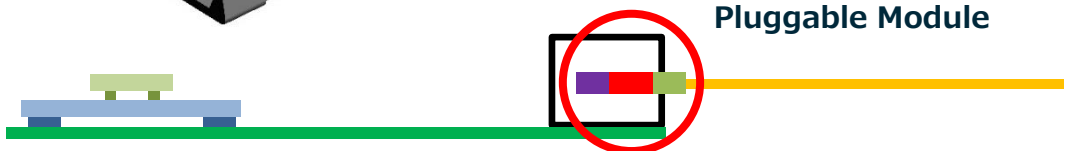
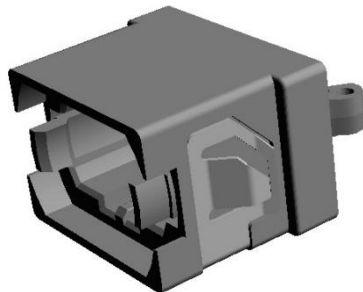
## Transceiver type

The "Transceiver type" is suitable for expanding the mounting space in an optical transceiver.



## Panel type

The "Panel type" is suitable for expanding the mounting space inside the optical patch panel.



◆ Optical and mechanical reference planes comply with the following standard: IEC 61754-7-1, IEC 61754-7-3

**Hakusan Inc.**



16-4, 2-chome, Minamiikebukuro, Toshima-ku, Tokyo 171-0022, Japan  
TEL: +81(0)3 5951 1614 / FAX: +81(0)3 5951 1216

<https://hakusan-mfg.co.jp/en>

\*Contents of this brochure are subject to change without notice.



HS-CN004\_5 2023.6

# MT Ferrule $\Phi 80$

We are on track with development for the MT ferrule with a fiber hole diameter of 80 $\mu\text{m}$ . These MT ferrules are the same size as the standard MT ferrule.



## ▼ $\Phi 80\text{MT}$ Series

Product features		Mode	Product Name	Fiber count
250 $\mu\text{m}$ pitch fiber hole	<p><math>P\ 0.250 \times 11 = 2.750</math></p>	Multi Mode	12MT-PF-M- $\phi 80^{\text{A})\ast}$	12
			16MT-PF-M- $\phi 80^{\text{B})\ast}$	16
	<p><math>P\ 0.250 \times 15 = 3.750</math></p>	Single Mode	12MT-PA-S- $\phi 80^{\text{A})\ast}$	12
			16MT-PA-S- $\phi 80^{\text{B})\ast}$	16
125 $\mu\text{m}$ pitch fiber hole	<p><math>P\ 0.125 \times 11 = 1.375</math></p>	Multi Mode	24MT-PF-M- $\phi 80\text{-}125^{\ast}$	24
		Single Mode	24MT-PA-S- $\phi 80\text{-}125^{\ast}$	24

A) Optical interfaces comply with the following standards: IEC 61754-5 / IEC 61754-7-1 / TIA-604-5

B) Optical interfaces comply with the following standards: IEC 61754-5 / IEC 61754-7-3 / TIA 604-18

※: Under development

**Hakusan Inc.**



16-4, 2-chome, Minamiikebukuro, Toshima-ku, Tokyo 171-0022, Japan

TEL: +81(0)3 5951 1614 / FAX: +81(0)3 5951 1216

<https://hakusan-mfg.co.jp/en>

\*Contents of this brochure are subject to change without notice.



HS-CN005\_5 2023.8