

MT Ferrule $\Phi 80$

We are on track with development for the MT ferrule with a fiber hole diameter of 80 μ m. These MT ferrules are the same size as the standard MT ferrule.



▼ $\Phi 80$ MT Series

Product features		Mode	Product Name	Fiber count
250 μ m pitch fiber hole	<p>$P 0.250 \times 11 = 2.750$</p>	Multi Mode	12MT-PF-M- $\phi 80^{A)*}$	12
			16MT-PF-M- $\phi 80^{B)*}$	16
	<p>$P 0.250 \times 15 = 3.750$</p>	Single Mode	12MT-PA-S- $\phi 80^{A)*}$	12
			16MT-PA-S- $\phi 80^{B)*}$	16
125 μ m pitch fiber hole	<p>$P 0.125 \times 11 = 1.375$</p>	Multi Mode	24MT-PF-M- $\phi 80-125^{*}$	24
		Single Mode	24MT-PA-S- $\phi 80-125^{*}$	24

A) Optical interfaces comply with the following standards: IEC 61754-5 / IEC 61754-7-1 / TIA-604-5

B) Optical interfaces comply with the following standards: IEC 61754-5 / IEC 61754-7-3 / TIA 604-18

※: Under development

Hakusan Inc.



16-4, 2-chome, Minamikebukuro, Toshima-ku, Tokyo 171-0022, Japan

TEL: +81(0)3 5951 1614 / FAX: +81(0)3 5951 1216

<https://hakusan-mfg.co.jp/en>

*Contents of this brochure are subject to change without notice.



HS-CN005_5 2023.8

MT Ferrule

We've been producing a wide range of MT ferrule products lineup using ultra-high precision injection molding technology cultivated in our long manufacturing history.

The premium, super low loss type is also available for single-mode and multi-mode transmission with various fiber counts.

▼ 12/24/36/48 MT Ferrule Series



Transmission Mode	Product Name	Expected Polishing	Fiber Count	Insertion loss (dB)		
				0.35	0.5	0.7
Single Mode	12MT-PA-S	Angled PC	12			●
	12MT-PA-SLS	Angled PC	12	●		
	24MT-PA-S	Angled PC	24			●
	24MT-PA-LS	Angled PC	24		●	
	24MT-PA-SLS*	Angled PC	24	●		
	36MT-PA-S*	Angled PC	36			●
	36MT-PA-SLS*	Angled PC	36	●		
	48MT-PA-S*	Angled PC	48			●
Multi Mode	12MT-PF-M	Flat PC	12		●	
	12MT-PF-SLM	Flat PC	12	●		
	24MT-PF-M	Flat PC	24		●	
	24MT-PF-SLM	Flat PC	24	●		
	36MT-PF-M*	Flat PC	36		●	
	48MT-PF-M*	Flat PC	48		●	



12MT



24MT



36MT



48MT

◆ Comply with the following standard : IEC 61754-5 / IEC 61754-7-1 / IEC 61754-7-2 / TIA-604-5-C

※: Under development

■ MT ferrule manufactured by Hakusan Inc. has acquired technology transfer from NTT.

Hakusan Inc.



16-4, 2-chome, Minamiikebukuro, Toshima-ku, Tokyo 171-0022, Japan
 TEL: +81(0)3 5951 1614 / FAX: +81(0)3 5951 1216

<https://hakusan-mfg.co.jp/en>

*Contents of this brochure are subject to change without notice.

HS-CN001_7 2023.8

MT Ferrule

We've been producing a wide range of MT ferrule products lineup using ultra-high precision injection molding technology cultivated in our long manufacturing history.

The premium, super low loss type is also available for single-mode and multi-mode transmission with various fiber counts.



▼ 16/32 MT Ferrule Series

Transmission Mode	Product Name	Expected Polishing	Fiber Count	Insertion loss (dB)		
				0.35	0.5	0.7
Single Mode	16MT-PA-S	Angled PC	16			●
	16MT-PA-SLS	Angled PC	16	●		
	32MT-PA-S*	Angled PC	32			●
Multi Mode	16MT-PF-M	Flat PC	16		●	
	16MT-PA-SLM	Angled PC	16	●		
	32MT-PF-M	Flat PC	32		●	



16MT



32MT

◆ Comply with the following standard : IEC 61754-5 / IEC 61754-7-3 / IEC 61754-7-4 / TIA 604-18

※: Under development

■ MT ferrule manufactured by Hakusan Inc. has acquired technology transfer from NTT.

Hakusan Inc.



16-4, 2-chome, Minamiikebukuro, Toshima-ku, Tokyo 171-0022, Japan
 TEL: +81(0)3 5951 1614 / FAX: +81(0)3 5951 1216

<https://hakusan-mfg.co.jp/en>


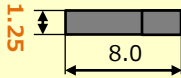
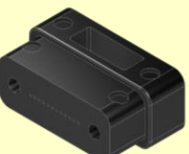
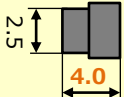
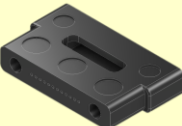
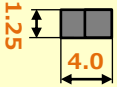
*Contents of this brochure are subject to change without notice.

HS-CN002_6 2023.8

MTCOMPACT®

We have a lineup of size-reduced MT ferrules.
These MT ferrules are helpful for limited space within equipment.

▼ MTCOMPACT® Series

Product features		Transmission Mode	Product Name	Fiber Count
Slim Half thickness of standard MT Ferrule		Multi Mode	12MT-PF-M-T1.25^{A)}	12
				
Short Half length of standard MT Ferrule		Multi Mode	12MT-PF-M-L4^{A)}	12
				
		12MT-PA-S-L4^{A)}※	12	
		16MT-PA-S-L4^{B)}※	16	
		12MT-PA-S-L4^{A)}※	12	
Slim & Short Half thickness & length of standard MT Ferrule		Multi Mode	12MT-PF-M-T1.25-L4^{A)}	12
				
		12MT-PA-S-T1.25-L4^{A)}※	12	
		16MT-PA-S-T1.25-L4^{B)}※	16	
		12MT-PA-S-T1.25-L4^{A)}※	12	

A) Optical interfaces comply with the following standards: : IEC 61754-5 / IEC 61754-7-1 / TIA-604-5

B) Optical interfaces comply with the following standards: IEC 61754-7-3 / TIA 604-18

※: Under development

Hakusan Inc.



16-4, 2-chome, Minamiikebukuro, Toshima-ku, Tokyo 171-0022, Japan

TEL: +81(0)3 5951 1614 / FAX: +81(0)3 5951 1216

<https://hakusan-mfg.co.jp/en>

*Contents of this brochure are subject to change without notice.



HS-CN003_8 2023.8

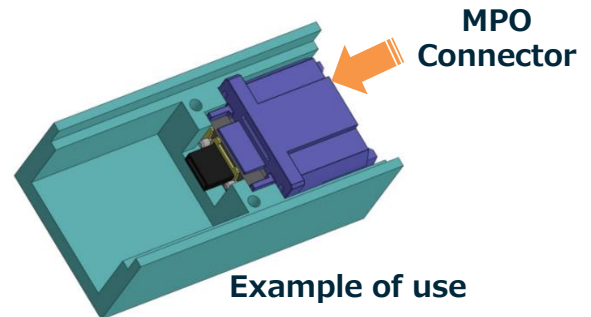
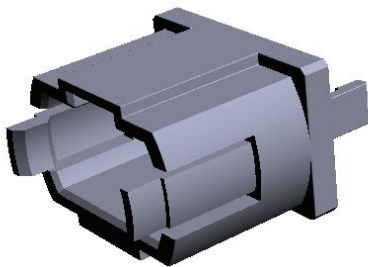
MTCOMPACT® Short - MPO Adapter

We've developed an adapter for MTCOMPACT® Short ferrule. This adapter connects the MTCOMPACT® Short ferrule to the MPO connector. We offer two types of adapters.



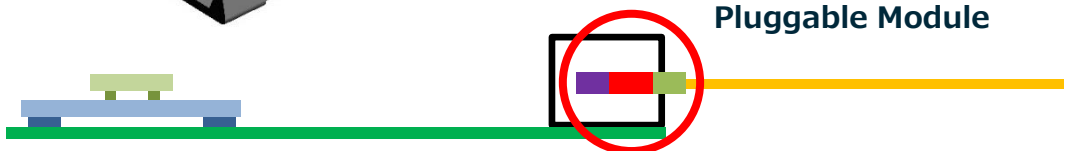
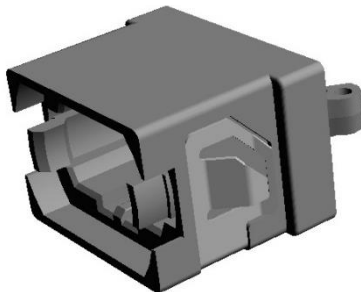
Transceiver type

The "Transceiver type" is suitable for expanding the mounting space in an optical transceiver.



Panel type

The "Panel type" is suitable for expanding the mounting space inside the optical patch panel.



◆ Optical and mechanical reference planes comply with the following standard: IEC 61754-7-1, IEC 61754-7-3

Hakusan Inc.



16-4, 2-chome, Minamiikebukuro, Toshima-ku, Tokyo 171-0022, Japan
TEL: +81(0)3 5951 1614 / FAX: +81(0)3 5951 1216

<https://hakusan-mfg.co.jp/en>

*Contents of this brochure are subject to change without notice.



HS-CN004_5 2023.6